

Self Sourcing

1. Research the company you want to work with.
2. Think beforehand what type of projects do you want to work on with companies.

Submit a self sourcing form

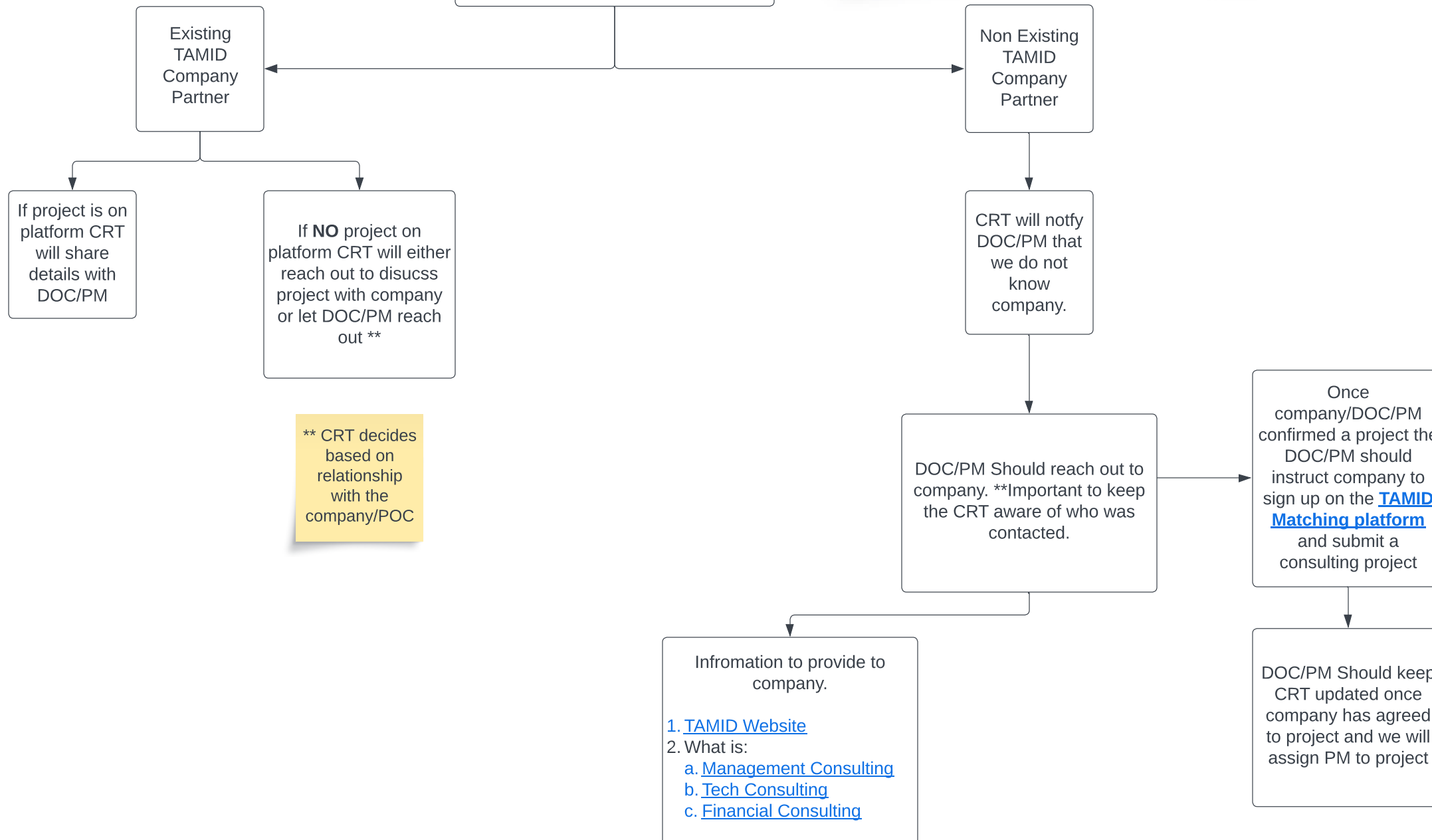
1. Limit to 3-5 forms/companies per Project Manager (PM)

Once submitted the Company Relations Team (CRT) will review and get back to you within 48 working hours.

The Company Relations team at TAMID is responsible for establishing and maintaining relationships with companies in order to provide valuable opportunities and resources for TAMID chapters. Our primary goal is to connect TAMID members with companies that align with the organization's mission and values, creating mutually beneficial partnerships. If you have any questions please reach out to companies@tamidgroup.org

Acronym

- Company Relations Team - CRT
- Director of Consulting - DOC
- Project Manager - PM
- Point of Contact - POC



** CRT decides based on relationship with the company/POC

Why is the Matching app so crucial?

1. CRT needs to keep track of companies/projects and who is working on them.
2. Maintain a relationship with the companies